

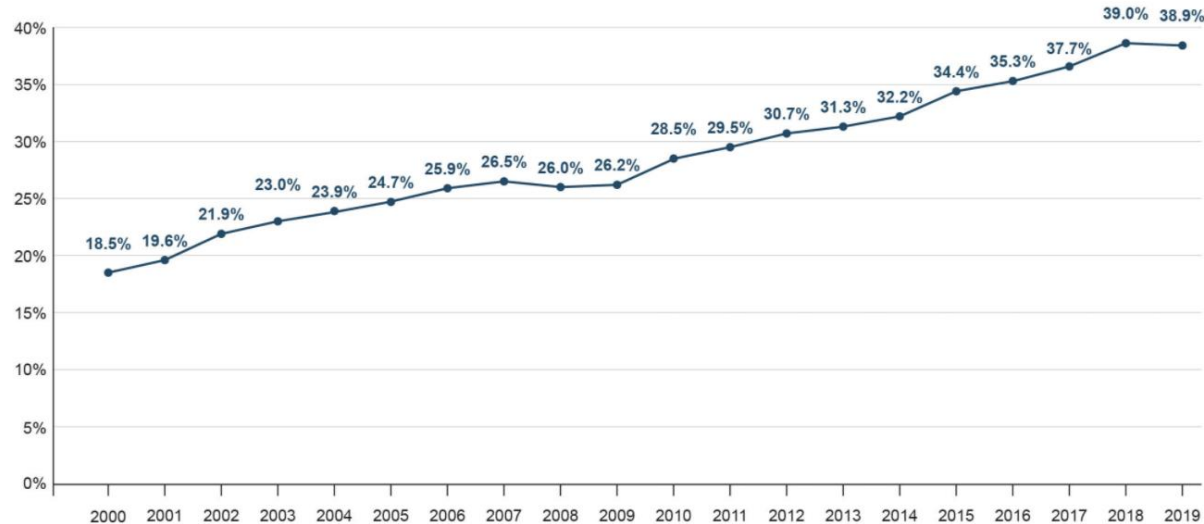


Maternal Health for Baby Wellbeing & Family Safety

Office of Substance Abuse and Mental Health

Mental Health for Baby Wellbeing & Family Safety

Prevalence of Parental Alcohol or Drug Abuse as an Identified Condition of Removal in the United States, 2019



Note: Estimates based on all children in out-of-home care at some point during Fiscal Year

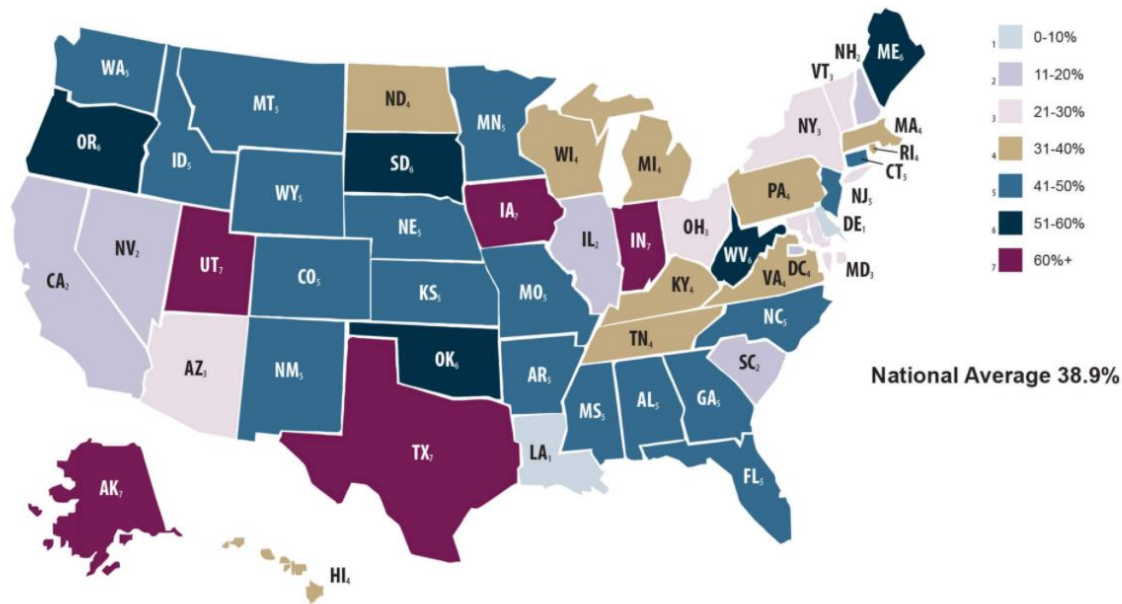
Source: AFCARS Data, 2000-2019

[Child Welfare and Alcohol and Drug Use Statistics | National Center on Substance Abuse and Child Welfare \(NCSACW\) \(samhsa.gov\)](https://www.samhsa.gov)



National Estimates

Parental Alcohol or Other Drug Abuse as an Identified Condition or Removal by State, 2019

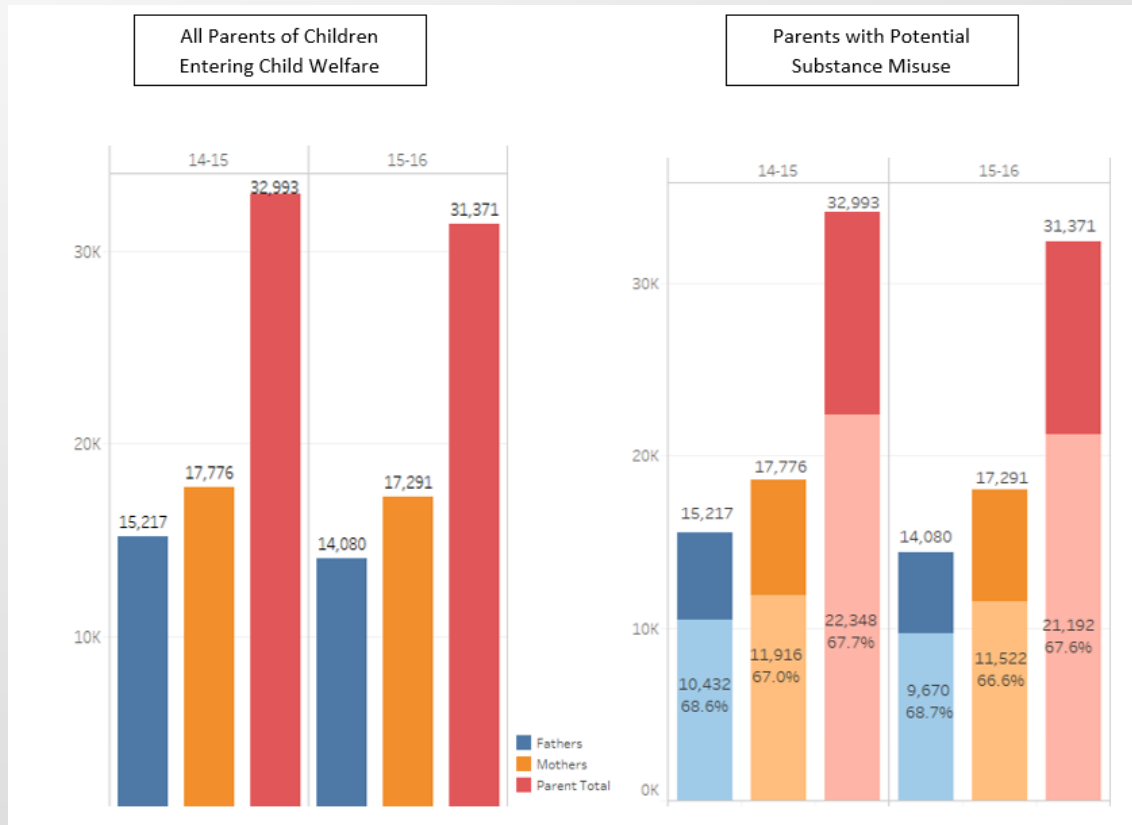


Note: Estimates based on all children in out-of-home care at some point during Fiscal Year

Source: AFCARS Data, 2019 v1



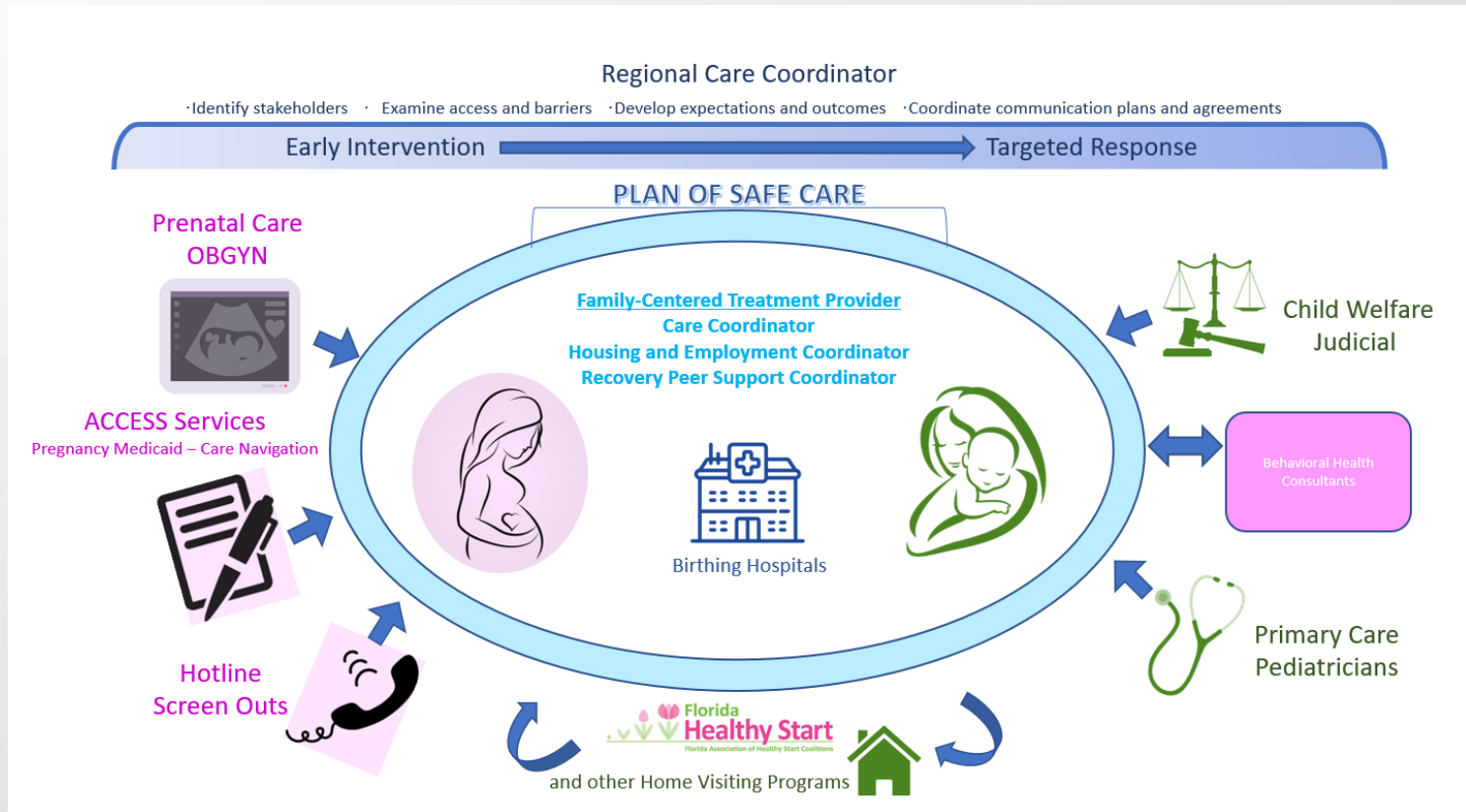
Florida Child Welfare Study



11.19.21



Approach





11.19.21



FLORIDA DEPARTMENT
OF CHILDREN AND FAMILIES
MYFLFAMILIES.COM

THANK YOU

Suzette B. Fleischmann, LMHC

Regional Director for Behavioral Health

Substance Abuse and Mental Health Program Office

Florida Department of Children and Families

Suzette.Fleischmann@myflfamilies.com

954-453-3447

